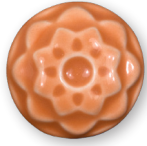


LAYERING Potter's Choice Celadon

Cone 5/6



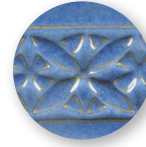
PC-2 Saturation Gold over C-65 Tangelo



PC-20 Blue Rutile over C-65 Tangelo



PC-21 Arctic Blue over C-65 Tangelo



PC-23 Indigo Float over C-65 Tangelo



PC-25 Textured Turquoise over C-65 Tangelo



PC-27 Tourmaline over C-65 Tangelo



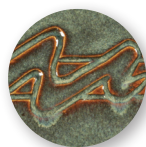
PC-29 Deep Olive Speckle over C-65 Tangelo



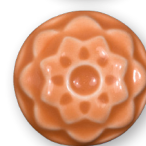
Conforms to
ASTM D-4236



PC-32 Albany Slip Brown over C-65 Tangelo



PC-33 Iron Lustre over C-65 Tangelo



PC-36 Ironstone over C-65 Tangelo



PC-39 Umber Float over C-65 Tangelo

Clay: AMACO® A-Mix White Stoneware No. 11

C-65 Layering Notes: Brush on three layers of base coat. Brush on three layers of top coat. (Let dry between coats.)

Firing: Test tiles have been fired to Cone 6

over
C-65
Tangelo

www.LayeringAmacoGlazes.com



f Join the conversation
www.facebook.com/groups/potterschoiceex

Reorder No. 000000



The Art & Creative Materials Institute AP (Approved Product) seal certifies this product to be safe for use by all ages. Conforms to ASTM D-4236.



The Art & Creative Materials Institute CL (Caution Label) seal restricts this product from children under the age of 13. Older users must follow all cautionary labeling. Conforms to ASTM D-4236.

Color may vary between printed copies.