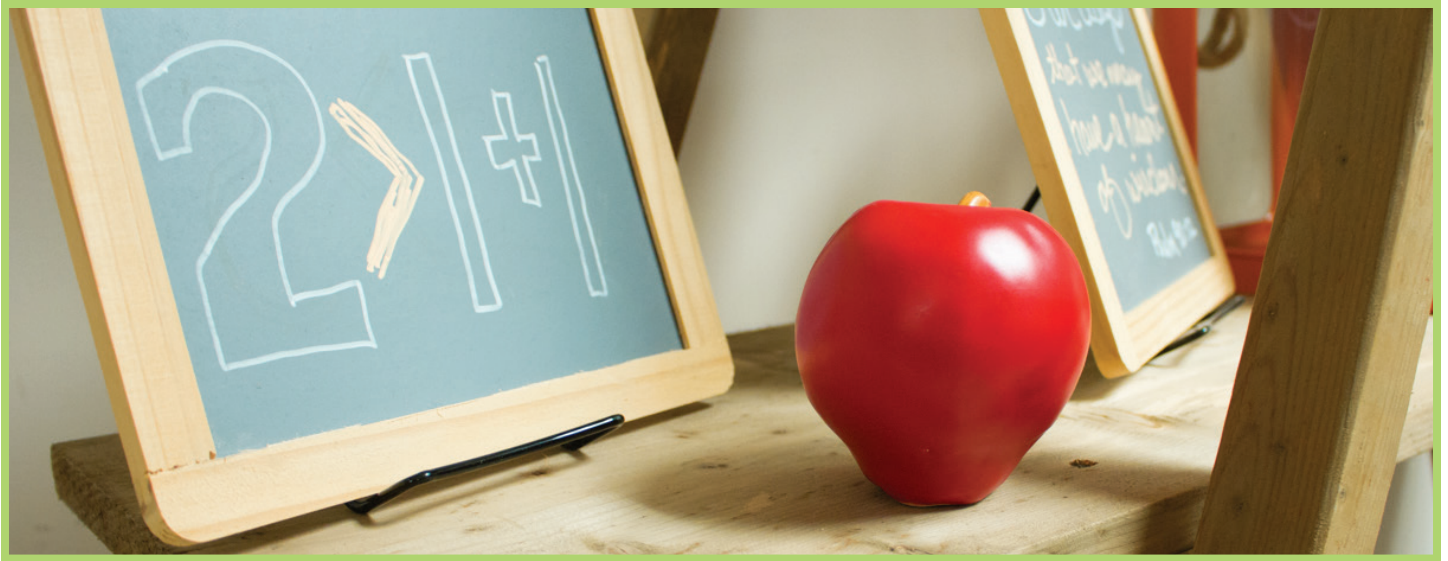


# NOURISHING CREATIVITY

AMACO® Lesson Plan  
Level: Grades K-5



(800) 374-1600  
[amaco.com](http://amaco.com)



## Fruit Lesson Plan

Nothing looks as delicious as a piece of ripe fruit. From Bernard Palissy the 16th century ceramicist, to Yixing Potters of China, to contemporary artists like Lisa Fitzgibbon, and Lorraine Taylor and Niky Smart, reproducing produce in clay has a long history. It's also fun! Possible themes for the classroom could be favorite fruits, backyard vegetables, or international produce. Make a trompe l'oeil fruit or a whole bowl of them, learn about your favorite produce.



### Visual Art Standards

- Apply media, techniques, and processes of ceramics.
- Evaluate and translate an object into clay.
- Examine agricultural products.

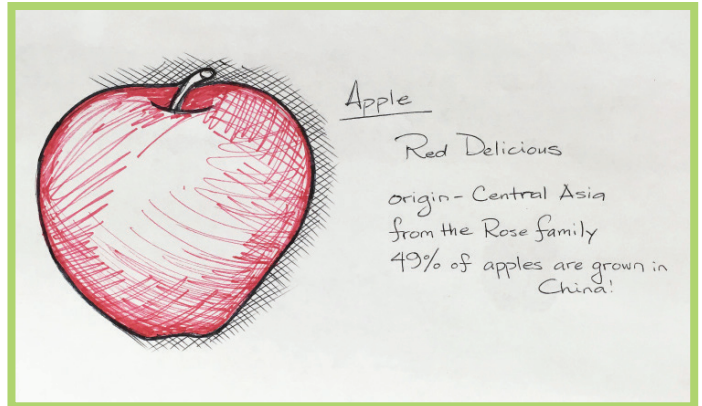
### Objectives and Goals

- Explore agricultural products, learn about origins and appearance.
- Create trompe l'oeil forms using pinch method and ceramic processes.
- Project combines social studies with contemporary art practice.

### Tools & Materials

- AMACO 25M Art Clay, 1-4 per student
- AMACO LM glazes
- Hardwood modeling tools
- Metal scraper
- Metal scraper with serrated edge (fork or scoring tool)
- Needle Tool
- Sketchhook, pencils or pens
- Glaze Brushes

# STEPS



1

**RESEARCH AND SKETCH:** Look at fruits and vegetables, both local and imported: surface texture, color, stems, etc. Draw shape of chosen fruit or vegetable, break down into basic forms.



2

**PINCH:** Create two pinch pots roughly the same size.



3

**JOIN:** Score the rims of both of the pinch pots. Join the pinch pots rim to rim, use a wood tool to joints the seam. Then add a coil to reinforce the seam.



4

**SHAPE:** Use hands and a paddle to shape.



5

**SCORE:** Use toothed rib or scoring tool to score the surface in preparation for smoothing.



6

**SMOOTH:** Use a metal draper or a rubber rib to smooth the surface.



7

**TEXTURE AND DETAILING:** Add stem, leaf, or texture to the piece.



8

**BISQUE:** Use a needle tool to put a hole in the base. Let the piece dry and then bisque fire.



9

**GLAZE:** Apply LM glazes and fire to cone 05 for a satiny surface.

## OPTIONAL

Combine the project with a field trip to a local agricultural project, farm, garden, etc.



For a Video Demonstration Visit  
[AMACOLESSONPLANS.COM](http://AMACOLESSONPLANS.COM)

## GLOSSARY

**Trompe L'oeil:** Painting technique used to create the illusion that a painted detail is a three-dimensional object.

**Scoring:** Carving tiny slits into the moist clay with a fork or scoring tool before adding slip and joining.

**Bisque:** Unglazed ceramics after the first firing.

**Fire:** To heat the clay in a kiln at a very high temperature until it is hard and becomes ceramic.