

# Velvet

UNDERGLAZES



Cone 05-10

Janina Myronova  
*Your Sparkling Eyes*  
Various Velvet Underglazes



# Velvet

## UNDERGLAZES

Category: Underglaze  
 Firing Temperature: Cone 05 - Cone 10



\* Approved when applied and fired under AMACO LG-10, F-10, or HF-9 clear glazes

V-308 Yellow	V-391 Intense Yellow	V-309 Deep Yellow	V-304 Straw	V-311 Nectar	V-350 Orange
V-388 Radiant Red	V-383 Light Red	V-389 Flame Orange	V-392 Blood Orange	V-384 Real Orange	V-390 Bright Orange
V-387 Bright Red	V-382 Red	V-318 Rose	V-317 Coral	V-323 Salmon	V-375 Maroon
V-381 Amethyst	V-380 Violet	V-379 Ultra Violet	V-321 Lilac	V-315 Peach	V-320 Lavender
V-322 Purple	V-325 Baby Blue	V-326 Medium Blue	V-330 Indigo	V-386 Electric Blue	V-336 Royal Blue
V-332 Teal Blue	V-341 Blue Green	V-327 Turquoise Blue	V-329 Seaglass	V-328 Iceberg Blue	V-349 Cactus
V-347 Pistachio	V-345 Light Green	V-353 Dark Green	V-333 Avocado	V-376 Hunter Green	V-343 Chartreuse
V-301 Ivory Beige	V-314 Chocolate Brown	V-303 Terra Cotta	V-385 Cinnamon	V-313 Red Brown	V-366 Teddy Bear Brown
V-364 Elephant	V-356 Pearl Gray	V-360 White	V-359 Ultra White		
V-361 Jet Black	V-370 Velour Black	V-362 Ultra Black			



FIRING KEY

Cone 05 tiles are AMACO 25-M White Art Clay. Glazed with LG-10 Clear Transparent.  
 Cone 5/10 tiles are AMACO 38 White Stoneware. Glazed with HF-9 Zinc-Free Clear.

# Velvet ADVANTAGE

- Velvety smooth, unglazed finish
- Bold, vibrant color at any cone
- Available in 2oz or 16oz jars
- Stiff - won't run when fired
- Consistent, reliable results
- Fires true to wet color
- Some colors available in gallons
- Enhanced saturation under clear glaze



Laura Caroline Casas

## FAQ

**Apply to...** Greenware (wet, leather-hard, or bone-dry ware) or bisqueware

**Fire to...** Cone 05 - Cone 10

**Note:** Velvets are formulated to be most vibrant between Cones 05 and 5. Most Velvets will maintain their vibrant color all the way up to Cone 10, but some pigments will burn out at higher temperatures.

**Food safe?** Yes. All Velvet Underglazes hold an approved food safety status when applied and fired under an approved clear glaze (AMACO LG-10 or HF-9).

## COMPETITOR COMPARISON

See how AMACO Velvet Underglazes look compared to our leading competitors.



Competitor A



Competitor B



Competitor C



Competitor D

## MISHIMA WITH VELVETS

Try using wax resist with Velvets to create colorful inlays!

### 1. Underglaze



### 2. Wax



### 2. Carve



### 4. Underglaze Inlay



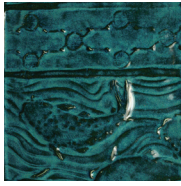
Scan to watch the technique video!



Find this technique and more at [www.amaco.com/resources/tutorials/](http://www.amaco.com/resources/tutorials/)

# LAYERING

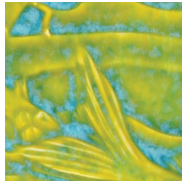
You can layer AMACO Opalescent glazes over Velvet Underglazes for brilliant pops of color and colorful combinations! This technique is most dynamic on textured surfaces.



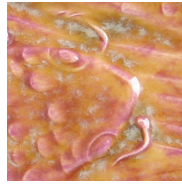
O-26 Turquoise over V-353 Dark Green



O-52 Fuchsia over V-386 Electric Blue



O-20 Bluebell over V-391 Intense Yellow



O-30 Autumn Leaf over V-380 Violet

# TECHNIQUES

- Painting / Brushwork
- Mishima
- Screenprinting
- Staining
- Sgraffito
- Transfer
- Stamping
- Illustration

## GET INSPIRED

Check out these professional artists using AMACO Velvet Underglazes in a variety of interesting ways.



Painterly Details - Nikki Mizak



Surface Staining - Travis Winters



Sgraffito - Sue Tirrell



Pops of Color - Sean Patrick O'Connell



Graphic Detailing - Molly Hatch

## INSPIRATION *Want more? Check out these great artists and follow us on socials!*

- Heesoo Lee
- Mark Errol
- Roberto Lugo
- Kip O'Krongly
- Christopher Dufala
- Jason Burnett
- Paul Wandless
- Chandra DeBuse
- En Iwamura
- Meredith Host

Questions? Email [customercare@amaco.com](mailto:customercare@amaco.com)