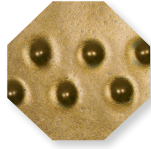


Potter's Choice *for a reduction look*

Cone 5-6



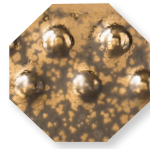
PC-1
Saturation Metallic



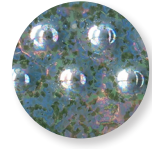
PC-2
Saturation Gold



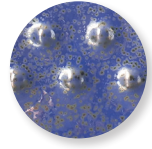
PC-4
Palladium



PC-9
Vintage Gold



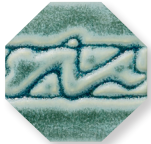
PC-10
June Bug



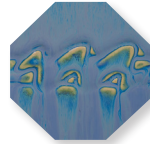
PC-11
Blue Spark



PC-12
Blue Midnight



PC-13
Serpentine Green



PC-14
Lapis Flow



PC-15
Satin Oribe



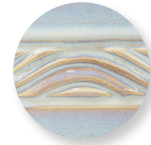
PC-16
Purple Crystal



PC-17
Honey Flux



PC-18
Tuscan Blue



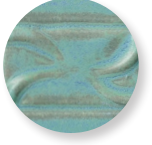
PC-19
Moon River



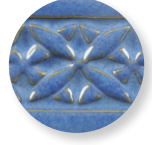
PC-20
Blue Rutile



PC-21
Arctic Blue



PC-22
Blue Stone



PC-23
Indigo Float



PC-24
Sapphire Float



PC-25
Textured Turquoise



PC-26
Blue Lagoon



PC-27
Tourmaline



PC-28
Frosted Turquoise



PC-29
Deep Olive Speckle



PC-30
Temmoku



PC-31
Oatmeal



PC-32
Albany Slip Brown



PC-33
Iron Lustre



PC-34
Light Sepia



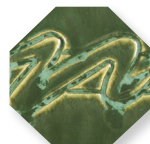
PC-36
Ironstone



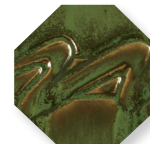
PC-38
Iron Yellow



PC-40
True Celadon



PC-41
Vert Lustre



PC-42
Seaweed



PC-43
Toasted Sage



PC-44
Sage



Conforms to
ASTM D-4236



Conforms to
ASTM D-4236



Conforms to
ASTM D-4236



Layering



Dinnerware
Safe

* * Except
PC-4
Palladium
and PC-64
Aventurine



Safe for Spray
Application

* * All AP glazes are safe for spray
application except PC-29 Deep Olive
Speckle, PC-52 Deep Sienna Speckle,
PC-59 Deep Firebrick, and PC-65 Black
Aventurine.

Potter's Choice *for a reduction look*

Cone 5-6



PC-45
Dark Green



PC-46
Lustrous Jade



PC-47
Emerald Falls



PC-48
Art Deco Green



PC-49
Frosted Melon



PC-52
Deep Sienna Speckle



PC-53
Ancient Jasper



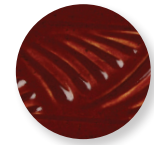
PC-55
Chun Plum



PC-56
Ancient Copper



PC-57
Smokey Merlot



PC-59
Deep Firebrick



PC-61
Textured Amber



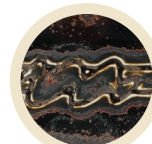
PC-62
Textured Amber Brown



PC-63
Cosmic Tea Dust



PC-64
Aventurine



PC-65
Black Aventurine



PC-66
Cosmic Oil Spot



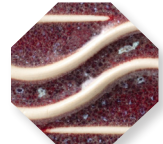
PC-67
River Rock



PC-68
Golden Honey



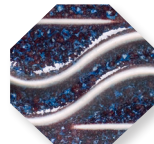
PC-69
Cosmic Gold Dust



PC-70
Copper Red



PC-71
Flambe



PC-72
Fire & Ice



Conforms to
ASTM D-4236



Conforms to
ASTM D-4236



Conforms to
ASTM D-4236



Layering™



Dinnerware
Safe

* Except
PC-4
Palladium
and PC-64
Aventurine



Safe for Spray
Application

** All AP glazes are safe for spray
application except PC-29 Deep Olive
Speckle, PC-52 Deep Sienna Speckle,
PC-59 Deep Firebrick, and PC-65 Black
Aventurine.