

 Cone 5/6

AMACO



COSMOS
GLAZES THAT ARE OUT OF THIS WORLD

COSMOS ADVANTAGE



- Iridescent, crystalline effects right out of the jar
- Grows dramatic crystals fast- no hold necessary
- Variety of colors and aesthetic versatility!



Conforms to
ASTM D-4236



Conforms to
ASTM D-4236



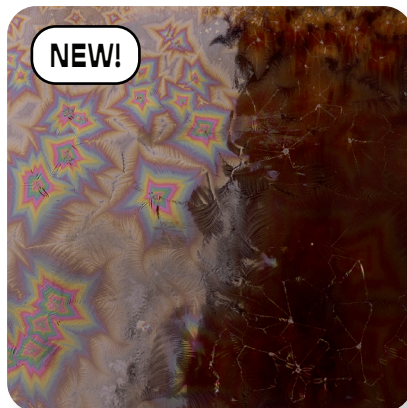
Food Safe

Category: Mid-High Fire Glaze
Firing Temp: Cone 5 - Cone 6



NEW!

CO-3 Event Horizon 

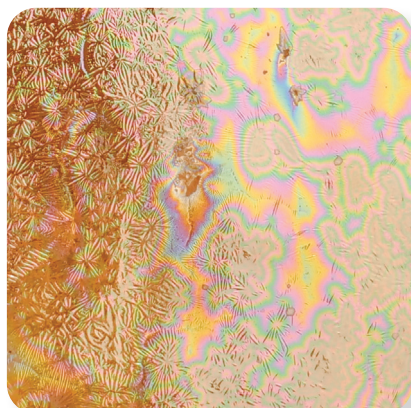


NEW!

CO-5 Dark Matter 



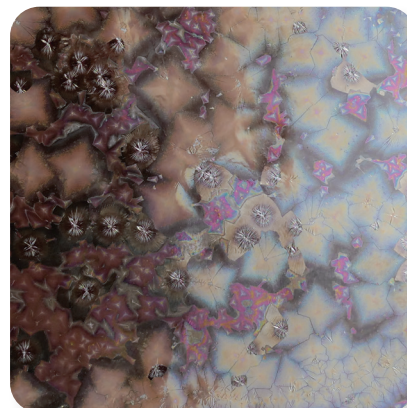
CO-6 Supernova 



CO-7 Solar Flare 



CO-8 Dark Star 



CO-14 Solar Rainbow 



NEW!

CO-21 Galactic Glacer 



NEW!

CO-24 Blue Starlight 

Definition of Cone Temperatures

Cone 5 = 1184°C (at 150°C/hour for the final 100°C of firing) / 2201°F (at 270°F/hour in the final 200°F of firing)

Cone 6 = 1241°C (at 150°C/hour for the final 100°C of firing) / 2266°F (at 270°F/hour in the final 200°F of firing)

TIPS AND TRICKS ✨

- For best results, leave inside or back of form unglazed to allow for off gassing and avoid pinholing.
- Firing schedules:
 - ✦ Can be fired in a normal, medium speed firing with no special cooling schedule.
 - ✦ Use a controlled cooling schedule for increased crystal growth.
 - Scan the QR code on back page for special firing schedule.
- If glazing a piece all the way to the end of the foot, we recommend using a **drip tray** to protect your kiln shelves. Scan the QR code to learn how!
 - ✦ TIP: Use horizontal textures at or near the base of pieces to slow down or catch the flow of glaze!
 - ✦ OR try using a stable glaze like a Celadon on the bottom of your piece to catch the glaze.

FAQ

Apply to... Cone 04 Bisqueware

Number of coats? 4 coats

Fire to... Cone 5 - Cone 6

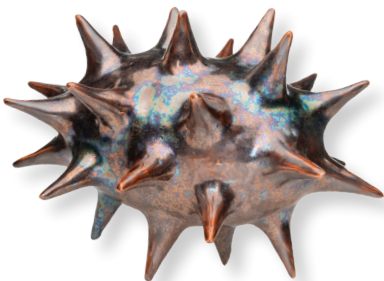
Food safe? Yes, but due to durability, these glazes are not recommended for food surfaces



How to Use a Drip Tray

BEST FORMS AND USES

Sculpture



CO-8 Dark Star on AMACO A-Mix White Stoneware No. 11. Fired to Cone 6.



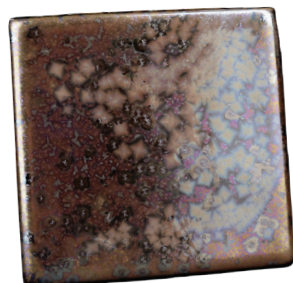
CO-6 Supernova over various Velvet Underglazes on AMACO A-Mix White Stoneware No. 11. Fired to Cone 5.

Decorative
(non-functional vessels)



CO-7 Solar Flare on AMACO A-Mix White Stoneware No. 11. Fired to Cone 5.

Tiles



CO-14 Solar Rainbow on AMACO A-Mix White Stoneware No.11. Fired to Cone 5.

VERTICAL VS HORIZONTAL

Crystals will develop on both horizontal and vertical surfaces. Vertical surfaces will encourage running.



CO-8 Dark Star
Fired Vertically



CO-8 Dark Star
Fired Horizontally

AMACO A-Mix White Stoneware No.11, fired to Cone 5.

EXPERIMENT!

We encourage testing new glaze combos and techniques! Share your results with us using #howiamaco



CO- 6 Supernova over V-382 Red fired to Cone 5

LAYERING WITH VELVET UNDERGLAZES

CO-6 Supernova layers nicely with AMACO's Velvet Underglazes. Tiles on AMACO A-Mix White Stoneware No.11. Fired to Cone 5.



CO-6 Supernova over V-317 Coral



CO-6 Supernova over V-389 Flame Orange



CO-6 Supernova over V-308 Yellow



CO-6 Supernova over V-343 Chartreuse



CO-6 Supernova over V-386 Electric Blue

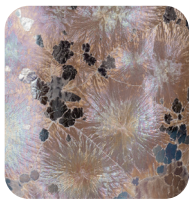


CO-6 Supernova over V-379 Ultra Violet

FIRING TEMP

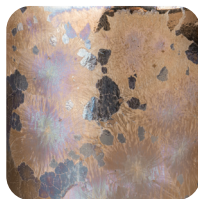
Firing temperature can affect the size and visual appearance of the crystals. We encourage testing to determine your preferred result.

Cone 5

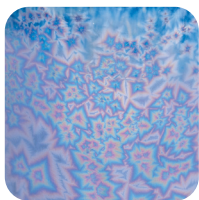


CO-3 Event Horizon

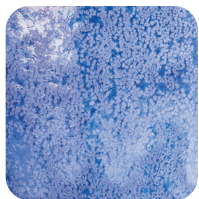
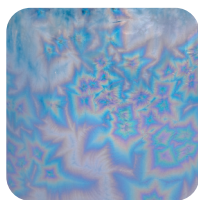
Cone 6



* CO-3 tends to have larger crystals at ^ 5 and be more bright gold at ^ 6



CO-21 Galactic Glacier



CO-24 Blue Starlight



APPLICATION

The Cosmos glazes benefit from a thick application. We recommend between 3-4 generous glaze coats for the desired crystalline effect.

CO-6 Supernova



2 Coats

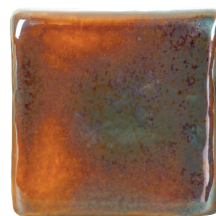


3 Coats



4 Coats

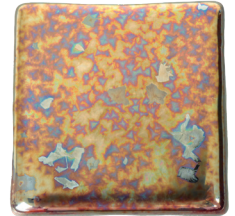
CO-14 Solar Rainbow



2 Coats



3 Coats



4 Coats

TIP: More coats can mean more magic, but it also means more running. Protect your kiln shelves!

TAKE YOUR COSMOS TO THE NEXT LEVEL

Use this firing schedule to level up your Cosmos!

